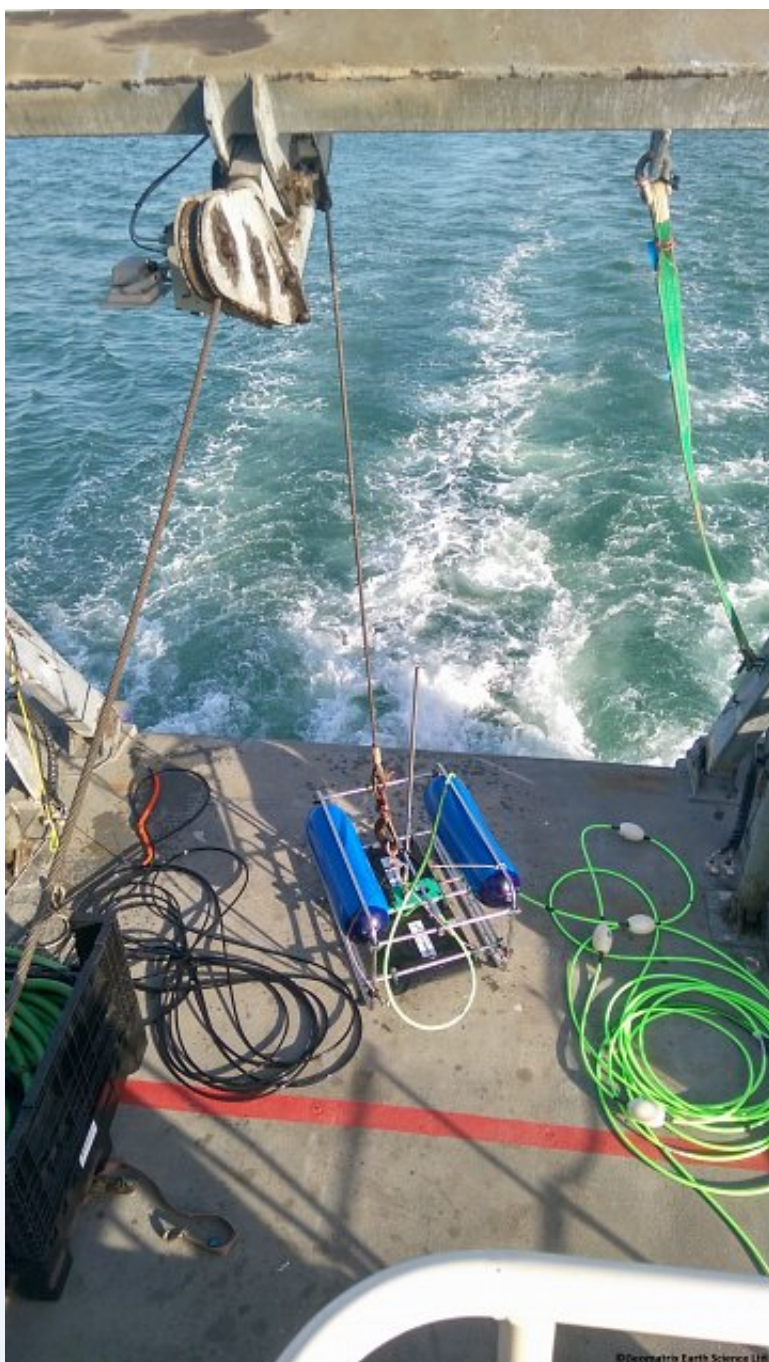


Bubble Pulser Data Sheet

The HMS 620 Bubble Pulser. Marine Seismic source offers a mid frequency wide bandwidth signal for ultra-high resolution marine seismic. Unlike other marine seismic sources the Bubble Pulser offers a very repeatable pulse signature even at high cycle rates, up to 0.125s intervals. High correlation between pulses enables the pulse to be easily stacked, compressed or deconvolved during processing. In shallow water the high pulse repetition rate can be used to reduce CDP intervals, alternatively additional shots can be recorded for stacking. When combined with the Geometrics MicroEel analogue seismic streamer, the Bubble Pulser can resolve strata to 200ms.

The system is light weight and easy to deploy by hand off the back of a small vessel. Due to the unique electromechanical plate design the Bubble Pulser top end power supply can be run on 240VAC or 24VDC, without changing the pulse shape and spectral bandwidth characteristics. The 24VDC power supply is ideal for small survey vessels where running a generator is impractical or presents a health and safety risk. The Bubble Pulser also comes in a dual plate configuration for improved single transmutation into unfavourable sea floor sediments.



Features

- Single and Dual Source Systems.
- Do Not Need Heavy Handling or Deployment Equipment.
- Perfect system for deploying off of a small vessel by hand.
- Compatible with Industry-Standard Data Acquisition Software & Multi-channel Streamers.
- Narrow-band 350 - 1000Hz pulse provides good penetration through many sediment types .
- Rugged, lightweight transducer platform provides stable operation in adverse sea-state conditions .
- Selectable 110 or 220 VAC source of less than 1 KWatt (2 KWatt for Dual Source)

- Optional 24 VDC powered system available (two 12V batteries; no generator needed)
- The top end power supply offers the ability to toggle between plates to aid monitor pulse stability and frequency spectrum.
- User-selectable trigger or external trigger input.

Product Dimensions

Physical	Dimensions (L x W x H)	Weight
(instrument only)	105cm x 80cm x 66cm	45kg single plate, 65kg dual plate

Technical Specifications

Source Type:	Electromechanical
Frequency Bandwidth:	350-1000Hz (at 10dB down).
Acoustic Source Level:	Approximately 50 Joules (=200 dB ref 1 μ Pa @ 1 metre).
Tow Vehicle:	Stainless steel frame, buoyant surface-towed vehicle.
Tow Cable:	50-meter abrasion resistant.
Trigger Input:	External key or manual time-based selection.
Repetition Rate:	8 times a second.

Gallery

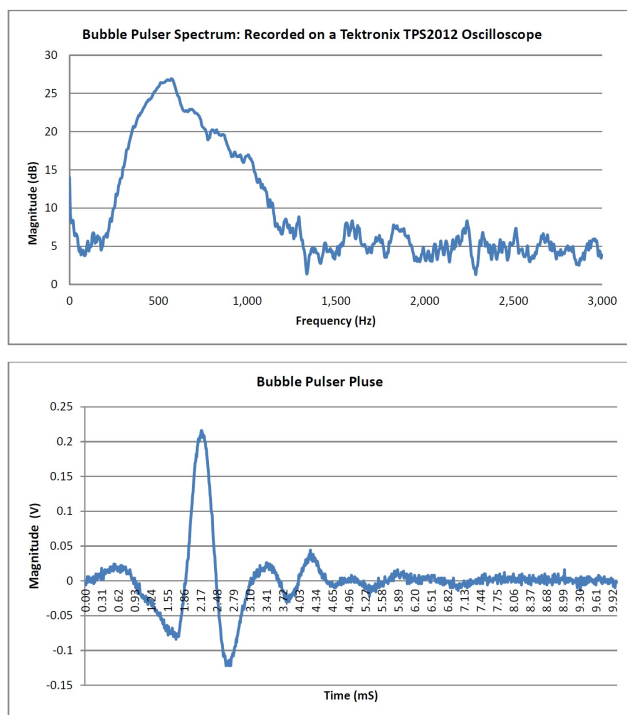


Figure 1: Frequency spectrum and pulse of the Bubble Pulser Seismic Source

Bubble Pulser transmitted pulse Shape and Spectrum.