

WiConnect Data Sheet

The WiConnect software, enables the user to directly download the data acquired using the WiConnect module from the Elrec or Syscal Pro to your smartphone, laptop and save it directly to the cloud server. The software itself enables the user to handle the data from a webpage platform on any windows, android or apple, WIFI enabled device allowing real time communication.

The injected current, measured voltage, resistivity and battery levels can be measured and viewed in real-time on the webpage. Additionally, the ProsysView Android app can be freely downloaded off GooglePlay in order to filter, visualise and export your resistivity soundings and chargeability pseudo-sections.

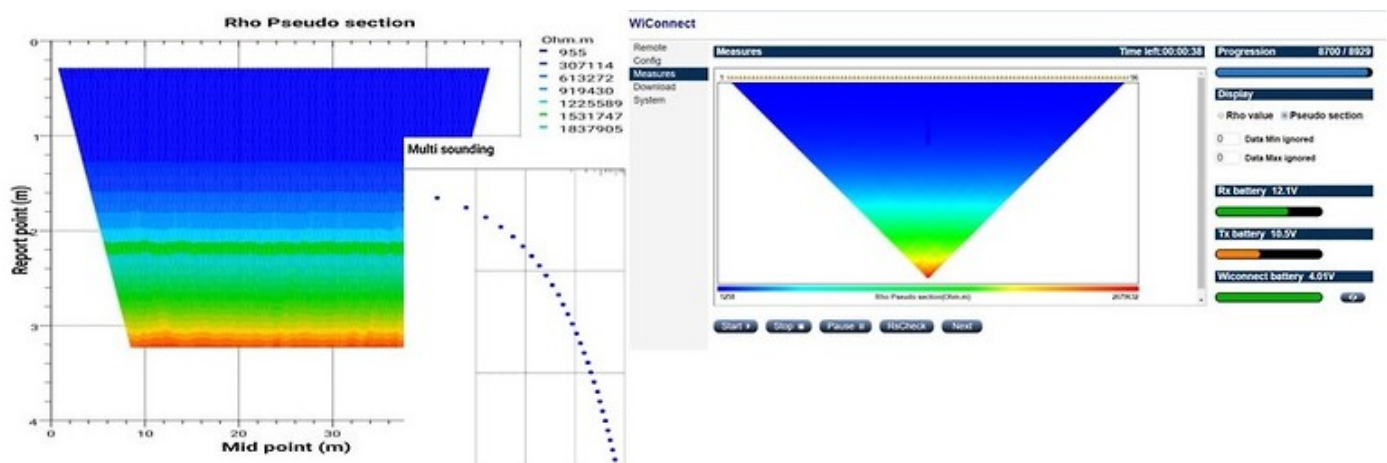


Fig. 1. Shows the WiConnect webpage and the ProsysView software pages (Courteously provided by Iris Instruments)

Product Dimensions

Physical	Dimensions (L x W x H)	Weight
(instrument only)	12cm (module) x 8cm (module) x 2.5cm (module)	200g (module)

Technical Specifications

Operating System:	Windows, Apple and Android
Compatible Systems:	Syscal Junior, Syscal R1 Plus, Syscal Pro Switch and the Elrec Pro Switch Systems
Operation:	Can run off a webpage