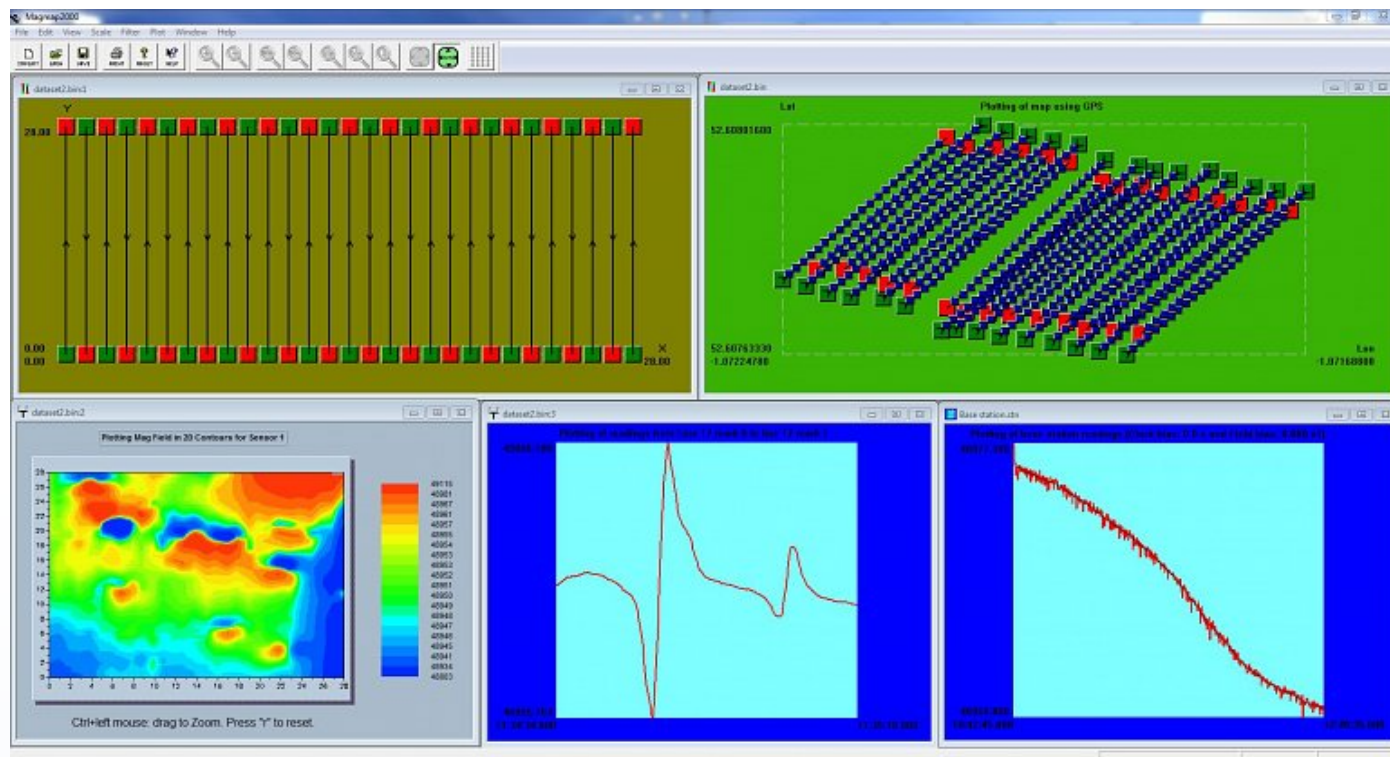


MagMap2000 Data Sheet

A versatile software package for downloading and post-processing Magnetic and Geo-electrical datasets recorded by Geometrics products.



MagMap2000 data visualisation Windows.

The software package is supplied free with any Geometrics magnetometer or OhmMapper system, and can be [downloaded](#) from the manufacturers website.

Features

- Positioning readings via GPS,
- Performing offset corrections (layback calculation),
- Correcting diurnal variation
- Removing rouge measurement values
- Basic processing routines
- Export to Oasis, Surfer, RES2DINV or generic ASCII .XYZ.

Please refer to the subsequent video tutorials for help navigating through MapMap2000.

Technical Specifications

Communication: USB or serial to instrument

Operating System (OS): Windows XP to Windows 10

Updates: Automatic notifications.

Gallery

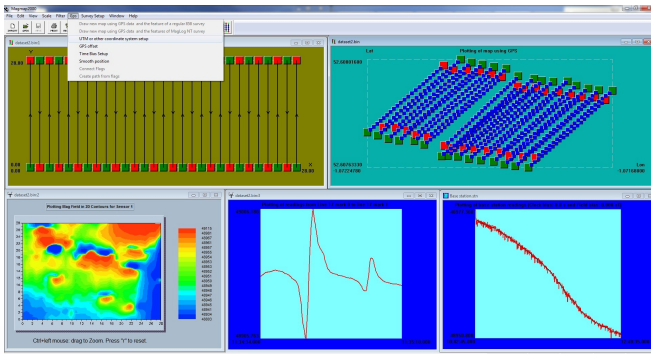
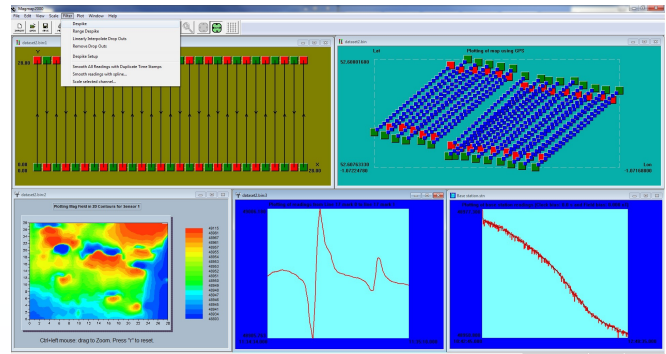
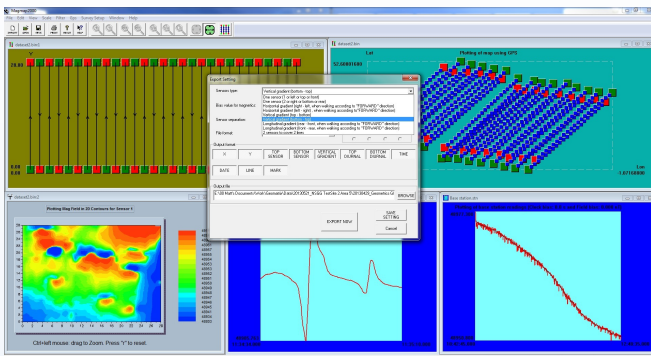


Image illustrating the GPS processing options available in MagMap2000.



Screenshot showing the basic processing filters offered by MagMap2000.



Screenshot presenting the Export options available in MapMap2000.